

CODO 90°

Clase 150

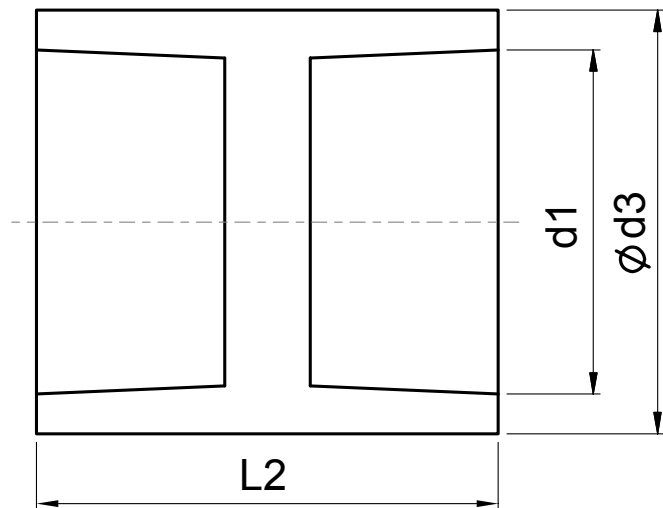
Normas de Diseño:

Roscado NPT ANSI B1.20.1

Material: Acero Inoxidable ASTM A351
CF8 (304) y CF8M (316)

Presión de Trabajo:

300 PSI @ -28°C a 38°C / 150 SWP



Unidad: Pulgadas (inch)

Medida	d1	d3	L2
1/8"	1/8"	0.55	0.79
1/4"	1/4"	0.73	1.06
3/8"	3/8"	0.85	1.10
1/2"	1/2"	1.04	1.42
3/4"	3/4"	1.26	1.54
1"	1"	1.56	1.69
1 1/4"	1 1/4"	1.91	1.89
1 1/2"	1 1/2"	2.15	1.89
2"	2"	2.62	2.20
2 1/2"	2 1/2"	3.31	2.56
3"	3"	3.94	2.80
4"	4"	5.08	3.27
5"	5"	6.36	3.54
6"	6"	7.28	3.96